



Sound absorption measurement

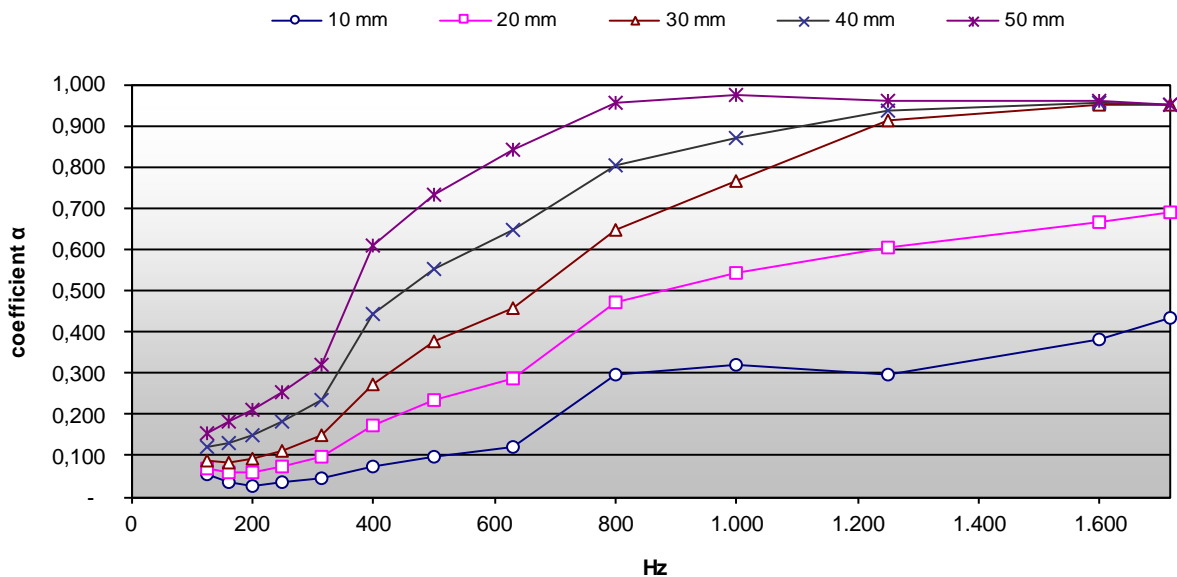
In accordance to ISO 10534-2

| | | | |
|---------------------|--------------------|---------------------------|--------|
| Material: | RE080-XX | Measure condition: | |
| Applicant: | Standard procedure | According to: ISO 10534-2 | |
| Place/date: | B6 / 2007-10-11 | Distance mic. 1: | 450 mm |
| Measured by: | PAN | Distance mic. 2: | 375 mm |

| Hz / α | 10 mm | 20 mm | 30 mm | 40 mm | 50 mm |
|---------------|-------|-------|-------|-------|-------|
| 125 | 0,054 | 0,071 | 0,088 | 0,120 | 0,152 |
| 160 | 0,033 | 0,057 | 0,081 | 0,131 | 0,181 |
| 200 | 0,028 | 0,059 | 0,091 | 0,150 | 0,210 |
| 250 | 0,033 | 0,072 | 0,111 | 0,181 | 0,251 |
| 315 | 0,046 | 0,097 | 0,148 | 0,234 | 0,321 |
| 400 | 0,074 | 0,174 | 0,274 | 0,441 | 0,608 |
| 500 | 0,099 | 0,237 | 0,375 | 0,554 | 0,733 |
| 630 | 0,119 | 0,288 | 0,457 | 0,649 | 0,841 |
| 800 | 0,295 | 0,471 | 0,647 | 0,802 | 0,956 |
| 1.000 | 0,320 | 0,542 | 0,764 | 0,870 | 0,976 |
| 1.250 | 0,298 | 0,604 | 0,910 | 0,935 | 0,960 |
| 1.600 | 0,382 | 0,666 | 0,950 | 0,955 | 0,960 |
| 1.715 | 0,433 | 0,691 | 0,950 | 0,950 | 0,950 |

This measurement requires careful control of temperature and humidity in an impedance tube in accordance with ISO 10534-2.

The sound absorption coefficient is measured as the percentage of incident sound energy that, rather than being reflected, is converted to other forms of energy such as heat.



The information provided in this data sheet is in good faith. No liability is, however, accepted for errors and omission and in no circumstances shall B6 Akustik be liable in damages for any loss or injury arising directly or as a consequence of the publication of this data sheet.